



# Certificate of Analysis

The Following Data Analysis is Reviewed and Approved by

Nisrin Samsum  
Head Chemist

Contact: info@aglabworks.com

8 July 2020

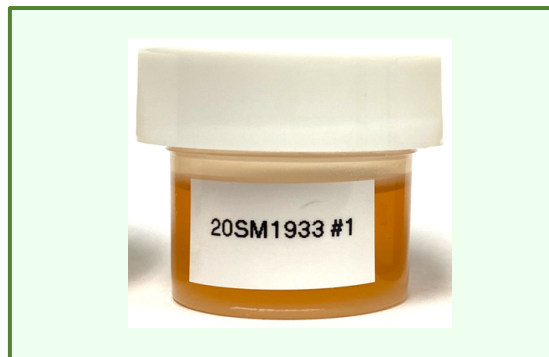
Date

<b>Customer Name:</b>	CBD Hemp Experts	<b>Sample Type:</b>	Tincture
<b>Sample Name:</b>	1500mg Peppermint Tincture	<b>Test Date:</b>	08-Jul-20, 11:13:46
<b>Sample ID:</b>	20SM1933	<b>Method:</b>	1 ul. 80% ACN Isocratic
<b>Sample Description:</b>	Amber color, oil based liquid		

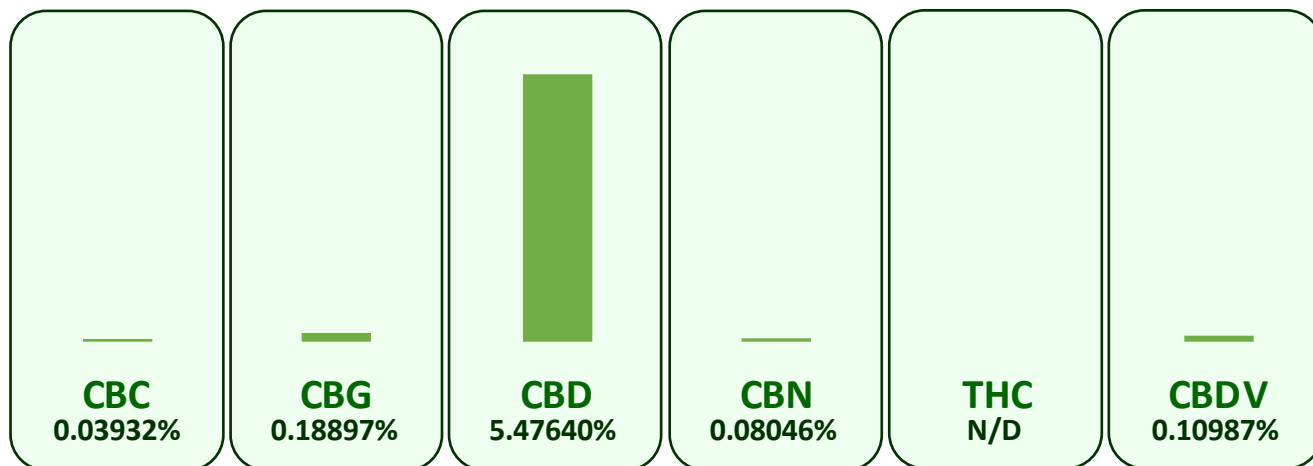
## POTENCY CANNABINOID PROFILE

CANNABINOID	Concentration (mg/unit)
Cannabichromene (CBC)	11.15
Cannabigerol (CBG)	53.57
Cannabidiol (CBD)	1552.53
Cannabinol (CBN)	22.81
$\Delta^9$ Tetrahydrocannabinol (THC)	N/D
Cannabidivarin (CBDV)	31.15

**Notes:** Unit size is 28.3495g.  
\*N/D refers to a cannabinoid being undetectable.



\* The chart below represents the weight percentage concentration between the cannabinoids in the sample. Each wedge is a representation of the percent of a specific cannabinoid relative to all. To achieve mg/g concentration simply move the decimal point over one place to the right for the percentages given below. (Example: if a cannabinoid was 0.256% weight concentration, this would correspond to 2.56mg/g)



### Notes:

Free from visual mold, mildew, and foreign matter.

The presented report is not to be applied to any identical or similar products.

ISO 17025



LIC: B2019015666